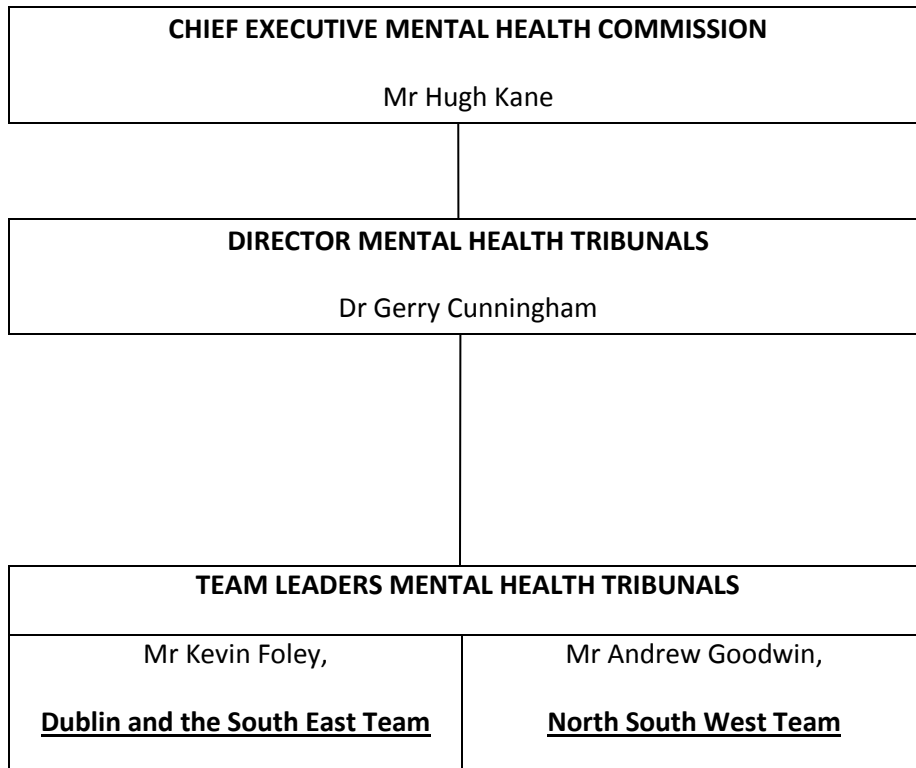




**MENTAL HEALTH TRIBUNALS DIVISIONAL STRUCTURE  
BY APPROVED CENTRE (ADULTS)**



**Contact Numbers**

Mental Health Commission (01) 636 2400

Gerry Cunningham (01) 636 2417

Kevin Foley (01) 636 2425

Andrew Goodwin (01) 636 2436

<b>EAST TEAM (DUBLIN AND THE SOUTH EAST) TEAM LEADER, KEVIN FOLEY</b>	
<b>Approved Centre</b>	<b>Team</b>
St Ita's Hospital	East
St Joseph's Intellectual Disability Services	East
St Brendan's Hospital	East
Hampstead Hospital	East
St Patrick's Hospital	East
St Edmundsbury, Lucan	East
Mater Hospital	East
St Vincent's Hospital, Fairview	East
Connolly Hospital Department of Psychiatry	East
Connolly Hospital Dept. of old Age Psychiatry	East
Highfield Hospital	East
Lois Bridges Treatment Centre, Dublin 13	East
Newcastle Hospital	East
St Senan's Hospital	East
St Luke's Hospital, Clonmel	East
St Michael's Unit , Clonmel	East
St Otteran's Hospital Waterford	East
Waterford Regional - Department of Psychiatry	East
St Canice's Hospital Kilkenny	East
St Dymphna's Hospital Carlow	East
St Luke's Hospital, Kilkenny	East
Lakeview Unit	East
AMNCH - Acute Psychiatric Unit	East
St Loman's Hospital, Palmerstown	East
Central Mental Hospital	East
St. Vincents - Elm Mount Unit	East
St. John of God Hospital	East
Stewart's Hospital	East
Jonathan Swift Clinic St James Hospital	East
Bloomfield Care Centre – Bloomfield, Kylemore, Owendoher & Swanbrook Wings,	East
Kerry General Hospital	East
St Finan's Hospital Killarney	East

<b>NORTH, SOUTH WEST TEAM (EXCLUDES DUBLIN AND THE SOUTH EAST) TEAM LEADER, ANDREW GOODWIN</b>	
<b>Approved Centre</b>	<b>Team</b>
St Michael's Unit, Mercy Hospital	NSW
Carraig Mor Centre Cork	NSW
St Stephen's Hospital Cork	NSW
Bantry General Hospital – Centre for MH Care and Recovery	NSW
St Finbarr's Hospital, Cork	NSW
Cork University Hospital	NSW
St Joseph's Hospital Limerick	NSW
Tearmann Ward and Currigour Ward (St Camillus Hospital)	NSW
Midwestern Regional Hospital (Limerick)	NSW
Adult Mental Health Unit - Mayo General Hospital	NSW
An Coillín, Castlebar	NSW
St Anne's Unit, Mayo	NSW
Teach Aisling	NSW
St Loman's Hospital Mullingar	NSW
Galway University Hospital	NSW
Roscommon Department of Psychiatry	NSW
St Brigid's Hospital, Ballinasloe	NSW
Midwestern Regional Hospital (Ennis)	NSW
Cappahard lodge	NSW
Orchard Grove	NSW
Midland Regional Hospital, Portlaoise - Dept of Psychiatry	NSW
St Fintan's Hospital	NSW
Carnamuggagh Donegal	NSW
Ballytivnan Sligo/Leitrim Mental Health Service	NSW
St Brigid's Hospital, Ardee	NSW
Our Lady's Hospital, Navan	NSW
Cavan General Hospital - Acute Psychiatric Unit	NSW
St Davnet's Hospital Monaghan	NSW